

# SunLock PoleLock

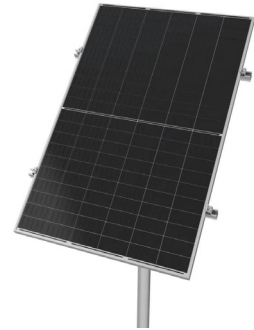
Solar Panel Installation Made Simple

**PoleLock is an Australian designed and engineered panel mounting system, part of the SunLock family of solar framing products.**

## PoleLock Summary

- Modular, expandable and versatile 6000 series alloy. SunLock's hot dipped galvanised design provides high durability and corrosion resistance
- Our expandable design allows for flexible system layouts for larger pole mount projects.
- Supports multiple panel sizes, ranging up to 450W
- AS / NZS 1170.2:2011 compliant in wind regions A & B
- Adjustment tilt angle range between 25 and 35 degrees to optimise energy yield
- Optional bird repellent kits available to further reduce maintenance and cleaning of panels

All PoleLock frames are fully certified to AS/NZS 1170.2:2011 and are backed by a comprehensive 25 year warranty making it a sensible choice for residential, commercial and remote area solar panel installations.



## Warranty - 25 years

All SunLock products come with a 25-year product warranty

## Design and Engineering - Australia

All systems are AS/NZS 1170.2:2011 certified and customised to the requirements of the Australia market. We provide you an ease of mind.

## Quick and Easy Install

All SunLock products are designed with an aim of easy to install and saving installer time while offering them a strong product for peace of mind.





**SunLock Adjustable Endclamp**

- Suitable for various thickness ranging from 30mm to 40mm
- S-clamp design to save installation time



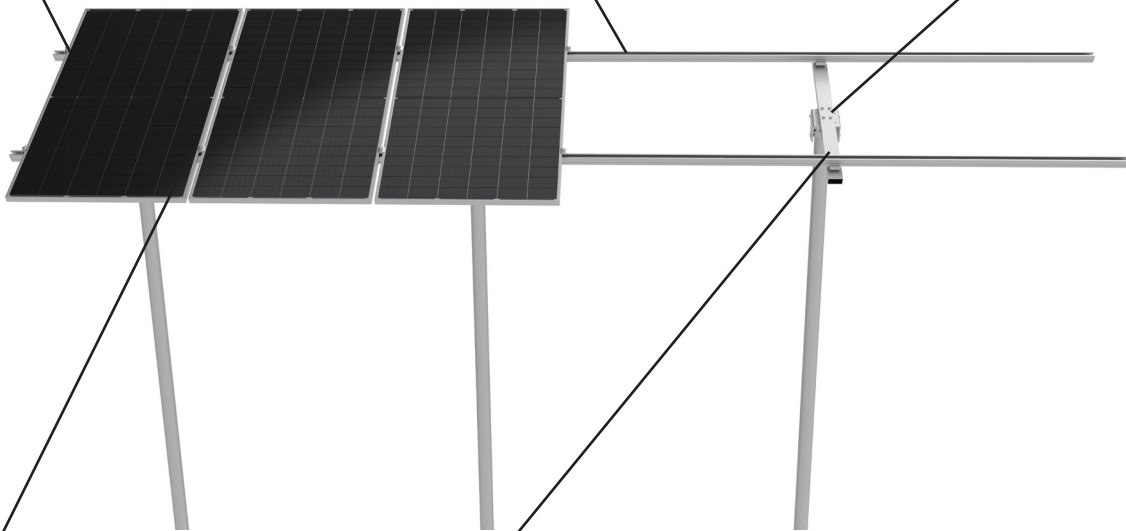
**SunLock Commercial C channel**

- Advance engineered U shape structure with great strength and good use of material
- Maintenance free AL/6005-T5 Aluminium



**SunLock Pole Mount bracket**

- 25° and 35° Adjustable
- Galvanized for greater corrosion resistance and suitable for coastal environments



**SunLock Mid Clamp**

- Built in Earthing Pins intergrated in Mid Clamps



**SunLock 2 screw feet**

- Extra screw for additional strength
- Clip in rail design for easy and time saving installation

**SunLock PoleLock**

- Designed to be continuously expandable
- Quick & easy to install
- A great choice for residential, commercial and rural solar panel installations

## Technical Data

	North configuration
<b>Features</b>	<ul style="list-style-type: none"> <li>• Tilt angles at 25° and 35°</li> <li>• Compatiable with 90DN DuraGal poles</li> <li>• Expandable Design</li> </ul>
<b>Design Life</b>	<ul style="list-style-type: none"> <li>• 25 years</li> </ul>
<b>Condition</b>	<ul style="list-style-type: none"> <li>• Wind Region A,B</li> <li>• Terrain Category 2, 3</li> </ul>
<b>Panel Size</b>	<ul style="list-style-type: none"> <li>• Permissible module dimensions (L × W × H): up to 2150 x 1200 x 30 - 40mm</li> </ul>
<b>Maximum height</b>	<ul style="list-style-type: none"> <li>• Above ground up to 2.1m</li> </ul>
<b>Installation requirements</b>	<ul style="list-style-type: none"> <li>• Sole bearing strength minimum 60kPa (Wet Clays; wet or loose sands)</li> </ul>
<b>Material</b>	<ul style="list-style-type: none"> <li>• Mounting rails, and Clamps: Aluminium AL/6005-T5 UNO</li> <li>• Mounting pole(not provided): Steel(Galvanised)</li> </ul>