

15th November 2012

Job No.: WME121039

Energy Matters Pty Ltd
Level 2, 101-105 Clarke Street
SOUTH MELBOURNE VIC 3205

Attention: Mr. J. Lawrence

Dear Sir

**CERTIFICATE OF STRUCTURAL ADEQUACY
GROUNDLOCK GROUND MOUNTED SOLAR PANEL MOUNTING SYSTEM
NOVEMBER 2012**

We, Wallbridge & Gilbert, being professional structural engineers within the meaning of the Building Code of Australia, hereby certify that we have reviewed the structural design of the GroundLock Solar Panel Mounting System and associated footings as detailed in drawings part number 1000206C01 & 1000207C00 both dated 15 November 2012, and that this work is in accordance with the new relevant provisions of the Standard Building Codes and in accordance with accepted engineering practice and principles.

This certification is subject to the limitations imposed on the system as detailed in the Manual. This document does not constitute certification of the adequacy of the ground or soil in which the footings are placed.

This certificate shall not be construed as relieving any other party of their responsibilities, liabilities or contractual obligations.

Please contact me if you have any queries with the above.

Yours faithfully,



MICHAEL VILLANI

For

WALLBRIDGE & GILBERT

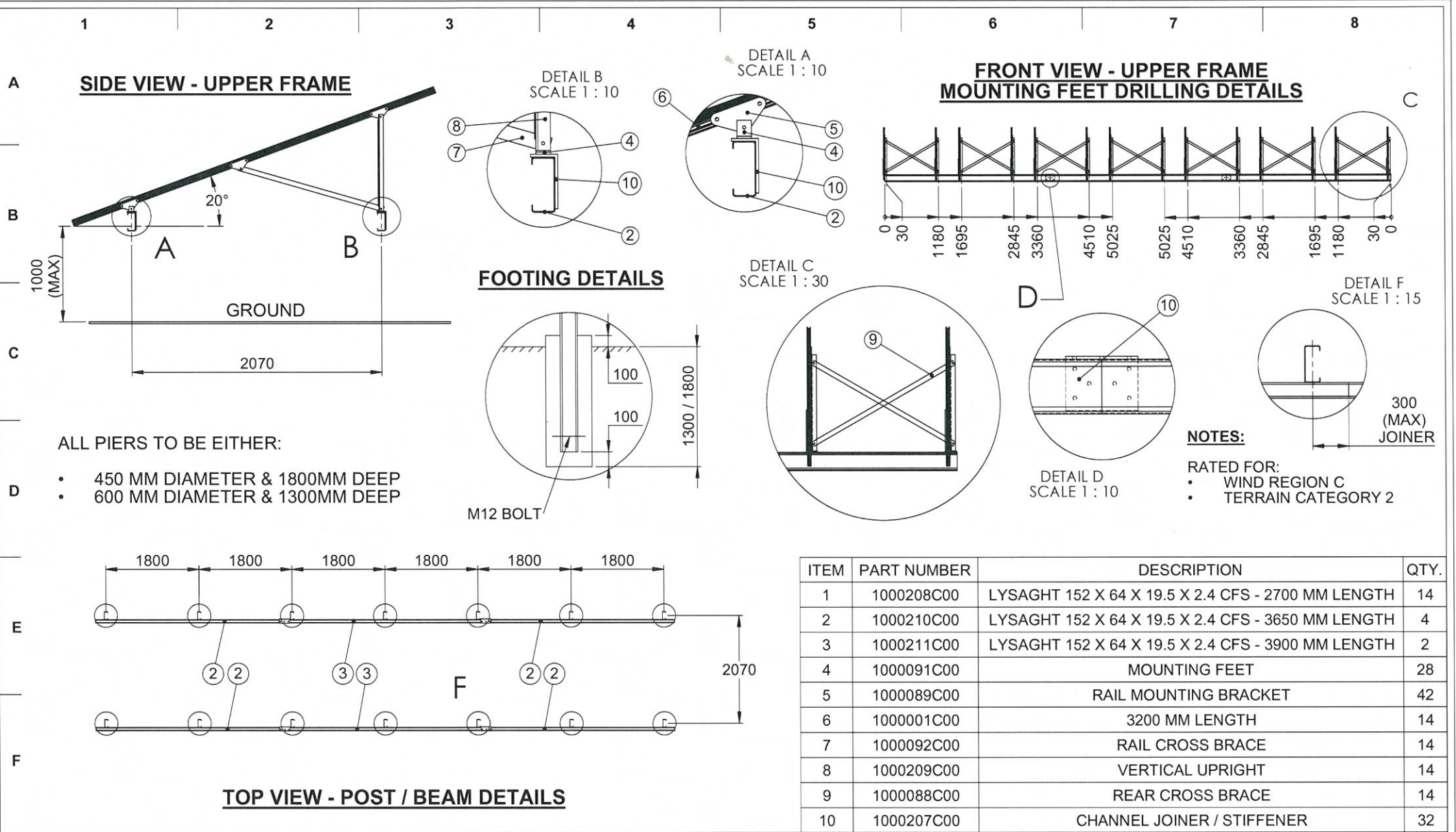
CJ:MV:cg

W&G

WALLBRIDGE & GILBERT
Consulting Engineers

20 Market Street
South Melbourne, Victoria 3205
Phone (03) 9696 9522
Facsimile (03) 9696 9577

wgmelb@wgmelb.com
www.wallbridgeandgilbert.com.au




ALL PIERS TO BE EITHER:

- 450 MM DIAMETER & 1800MM DEEP
- 600 MM DIAMETER & 1300MM DEEP

NOTES:

- RATED FOR: WIND REGION C
- TERRAIN CATEGORY 2

ITEM	PART NUMBER	DESCRIPTION	QTY.
1	1000208C00	LYSAGHT 152 X 64 X 19.5 X 2.4 CFS - 2700 MM LENGTH	14
2	1000210C00	LYSAGHT 152 X 64 X 19.5 X 2.4 CFS - 3650 MM LENGTH	4
3	1000211C00	LYSAGHT 152 X 64 X 19.5 X 2.4 CFS - 3900 MM LENGTH	2
4	1000091C00	MOUNTING FEET	28
5	1000089C00	RAIL MOUNTING BRACKET	42
6	1000001C00	3200 MM LENGTH	14
7	1000092C00	RAIL CROSS BRACE	14
8	1000209C00	VERTICAL UPRIGHT	14
9	1000088C00	REAR CROSS BRACE	14
10	1000207C00	CHANNEL JOINER / STIFFENER	32



ENERGYMATTERS.COM.AU

01	DRAWING DETAILS REVISED	JM	15/11/12
00	INITIAL RELEASE	JM	08/11/12
REV	DESCRIPTION OF REVISION	NAME	DATE

UNLESS OTHERWISE SPECIFIED: EDGES DIMENSIONS ARE IN MILLIMETERS

TOLERANCES:
LINEAR:
ANGULAR:

FINISH:
DO NOT SCALE DRAWING

TITLE: GroundLock - 21 panels (20 deg)

PART NUMBER: 1000206C01

WEIGHT:

MATERIAL:

DRAWN: JM

CHECKED: JL

SIGNED: *[Signature]*

DATE: 15/11/2012

SALES CODE: SLG521-20

TOLERANCES SHALL BE TO AS/NZS 1866:1997 UNLESS SPECIFIED OTHERWISE

SHEET 1 OF 1

DEBUR AND BREAK SHARP EDGES

A3

1 2 3 4 5 6 7 8

A

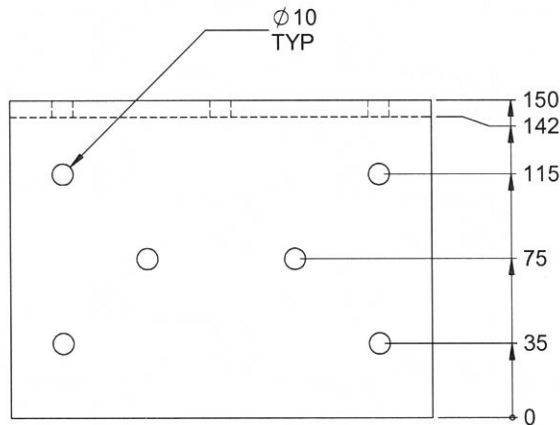
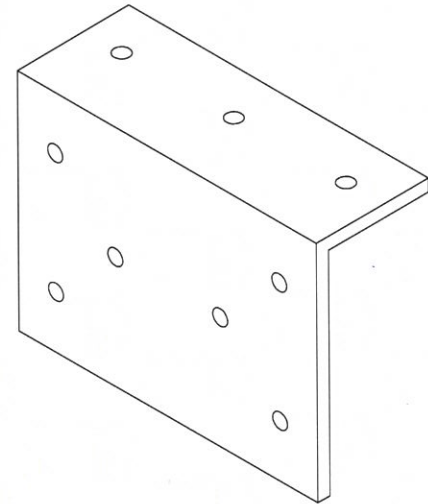
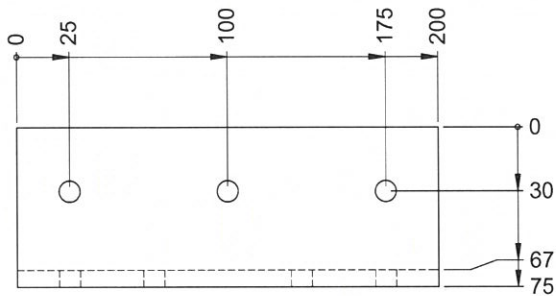
B


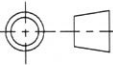

C

D

E

F



 ENERGYMATTERS.COM.AU	00	INITIAL RELEASE	JM	15/11/12	TITLE: GroundLock - Channel Joiner / Stiffener		TOLERANCES SHALL BE TO AS/NZS 1866:1997 UNLESS SPECIFIED OTHERWISE					
	REV	DESCRIPTION OF REVISION	NAME	DATE	PART NUMBER : 1000207C00		WEIGHT:			SHEET 1 OF 1		
	UNLESS OTHERWISE SPECIFIED: EDGES DIMENSIONS ARE IN MILLIMETERS		FINISH: DO NOT SCALE DRAWING			MATERIAL:		DRAWN: JM	CHECKED: JL	SIGNED: 	DATE: 15/11/2012	SALES CODE:
	A3											